

COVID-19 Modeling

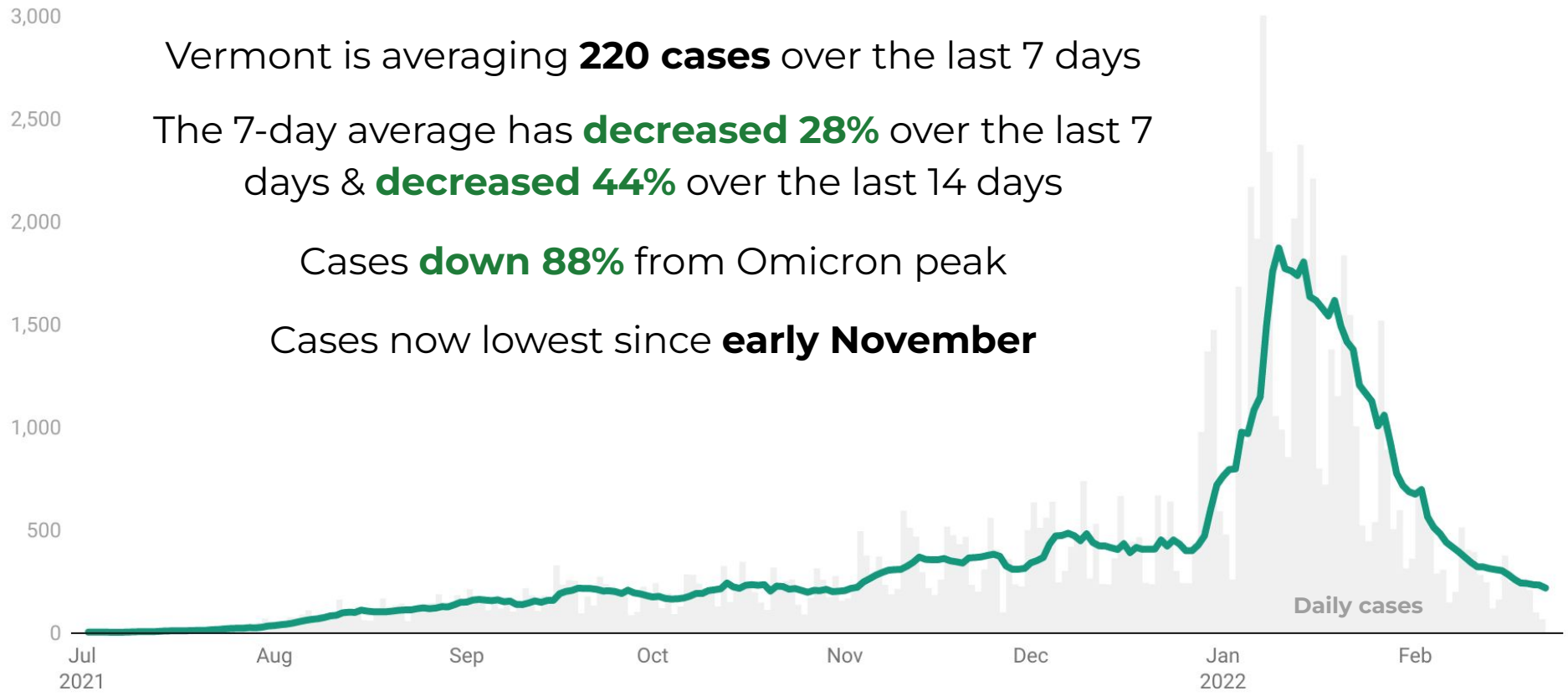
February 22, 2022

Presentation available at:
dfr.vermont.gov

Vermont Case Data

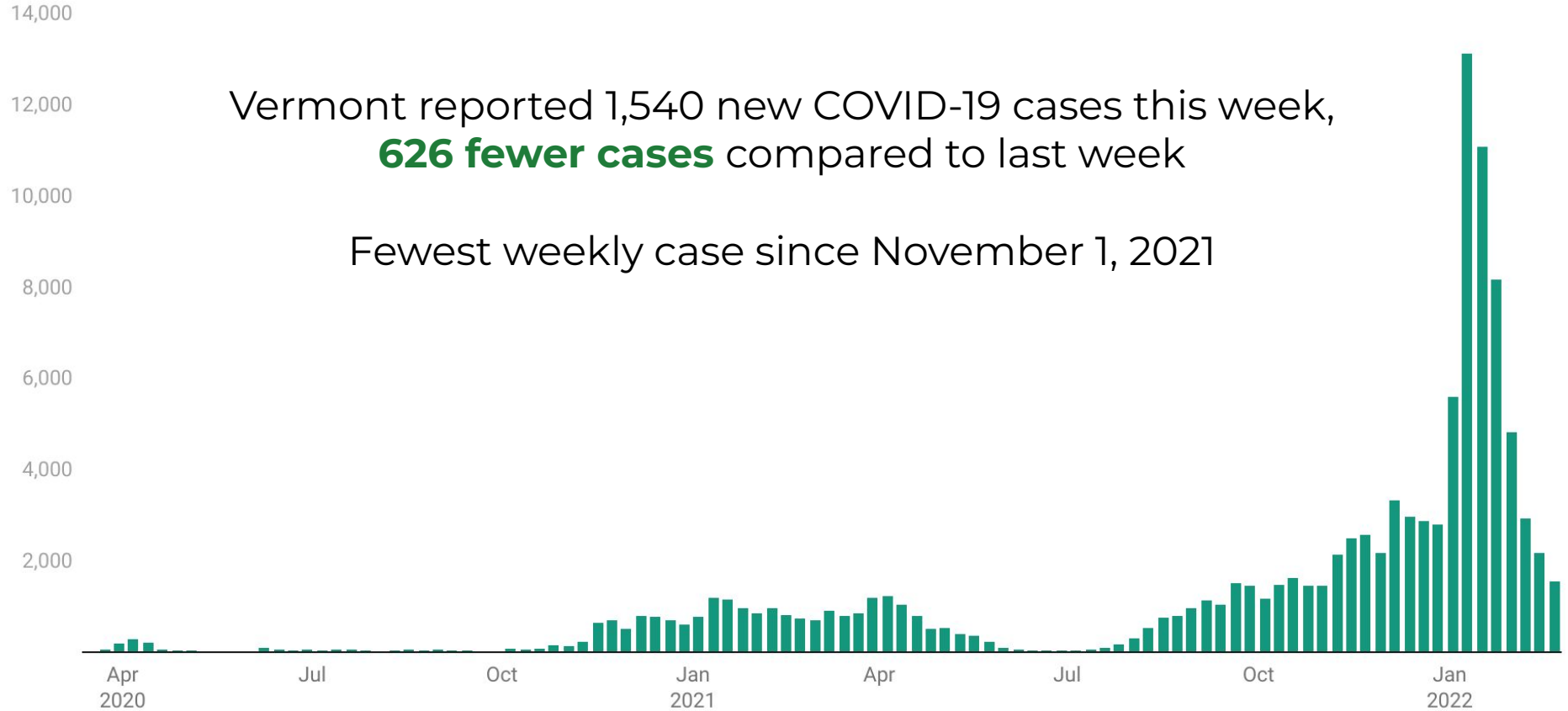
Vermont New COVID-19 Cases

— 7-Day Average



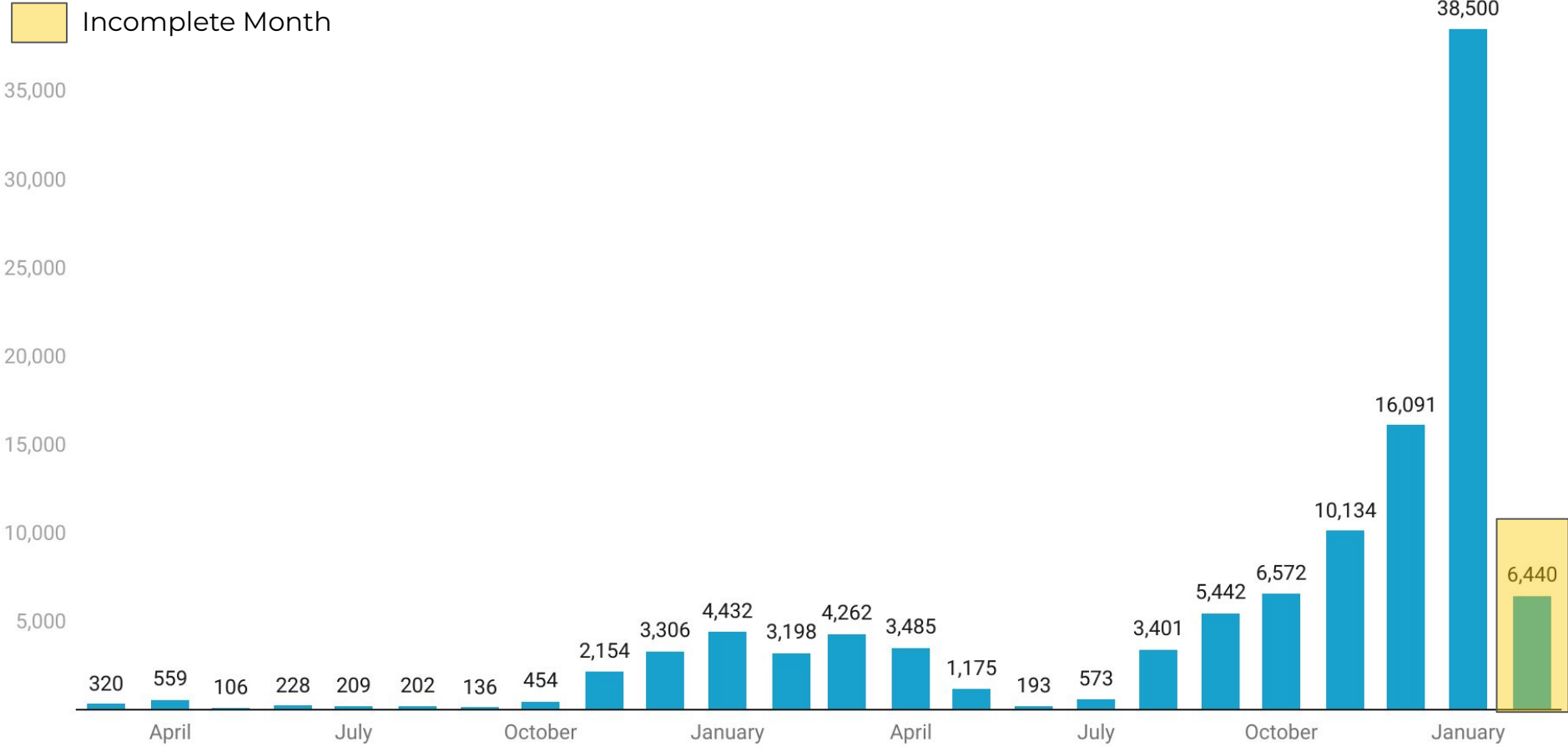
Source: VDH—February 22, 2022; created with Datawrapper

Vermont New Weekly COVID-19



Source: VDH—February 22, 2022; created with Datawrapper

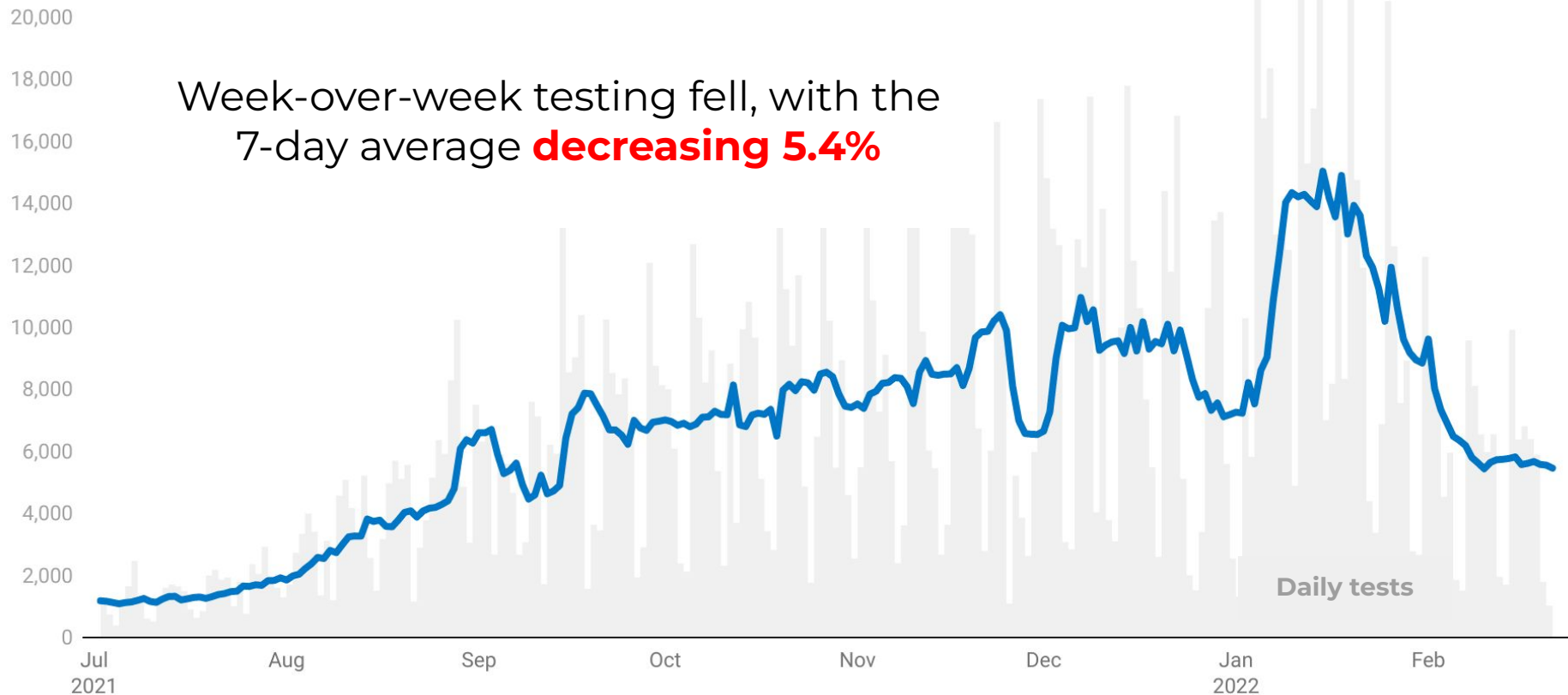
Vermont COVID-19 Cases By Month



Source: VDH—February 22, 2022; created with Datawrapper

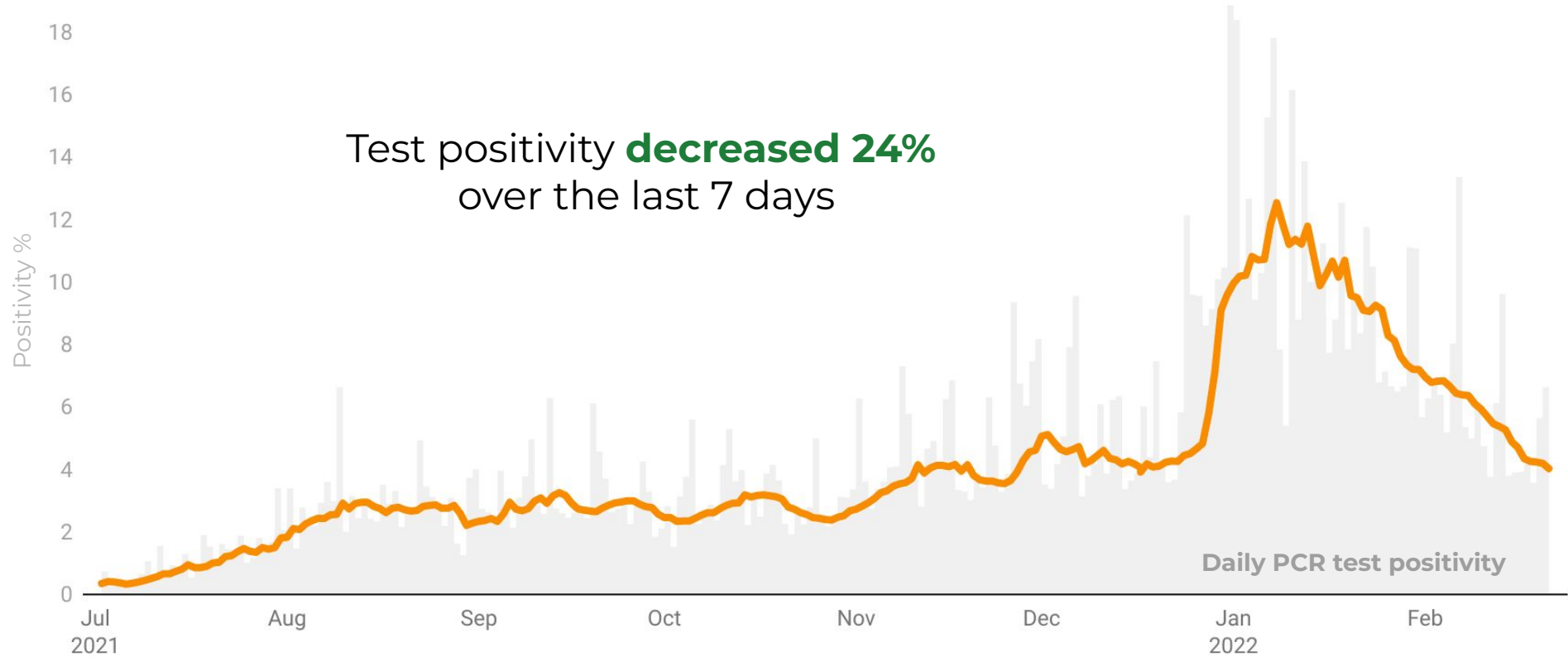
Vermont COVID-19 PCR Testing

7-Day Average



Vermont PCR Test Positivity

7-Day Positivity Rate



Active Outbreaks in Long Term Care Facilities

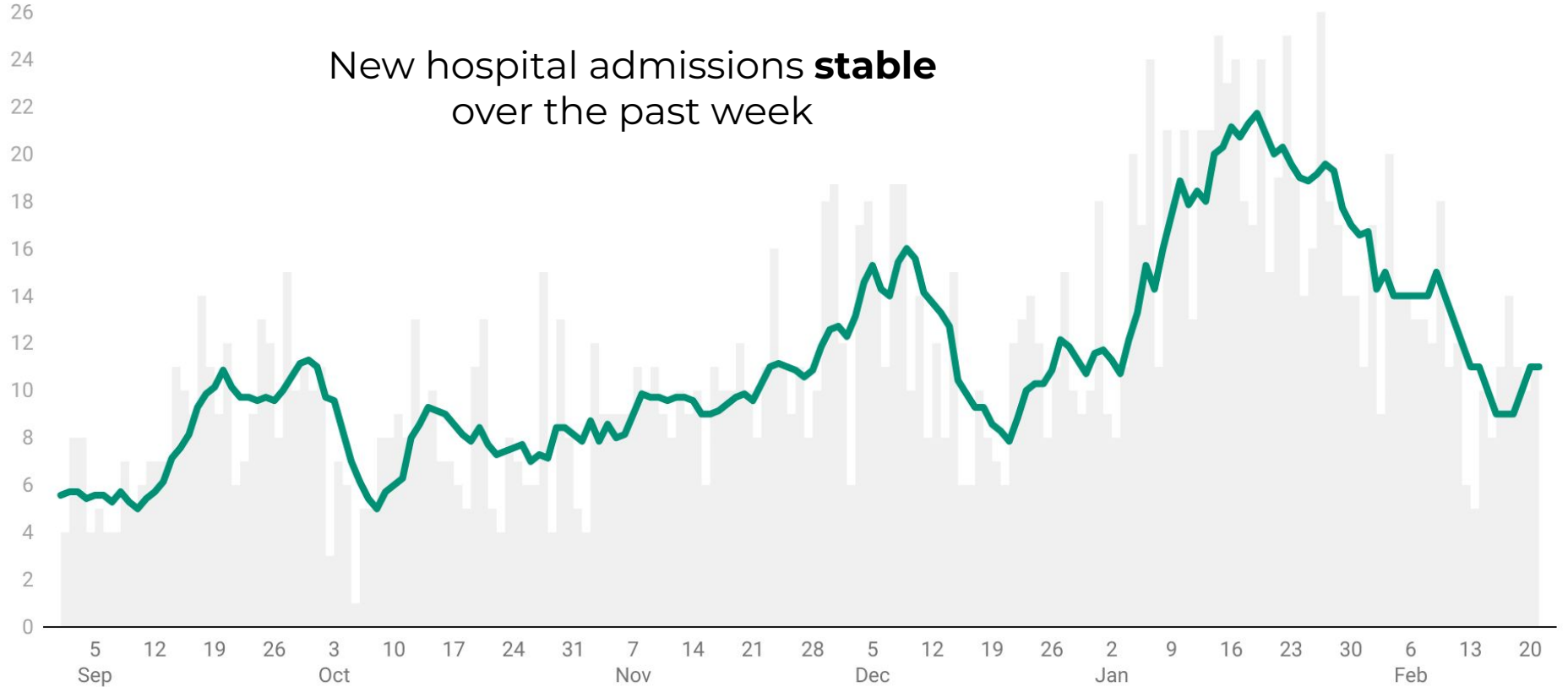
| Facility Name | Total COVID-19 Cases |
|---|----------------------|
| Mountain View Center | 79 |
| Woodridge Rehabilitation and Nursing | 71 |
| Crescent Manor Nursing and Rehabilitation Center | 56 |
| Vermont Veterans Home | 48 |
| The Pines at Rutland Center for Nursing & Rehab | 29 |
| Kirby House Inc | 18 |
| Franklin County Rehabilitation Center | 11 |
| LTC A | 11 |
| Brownway Residence | 8 |
| Greensboro Nursing home | 7 |
| Thompson House | Not Shown |
| Helen Porter Healthcare and Rehabilitation Center | Not Shown |
| Union House Nursing Home | Not Shown |
| Our Lady of the Meadows | Not Shown |
| Total (shown) | 338 |

Source: Vermont Department of Health—February 22, 2022 (reporting Monday through previous Sunday); 'Active' defined as less than 28 days since most recent case's specimen collection date or illness start date (whichever is later); *privacy suppressions include facility w/ <25 staff and residents and/or >75% of facility infected

Vermont Hospitalization Data

Vermont New COVID-19 Hospital Admissions

7-Day Average

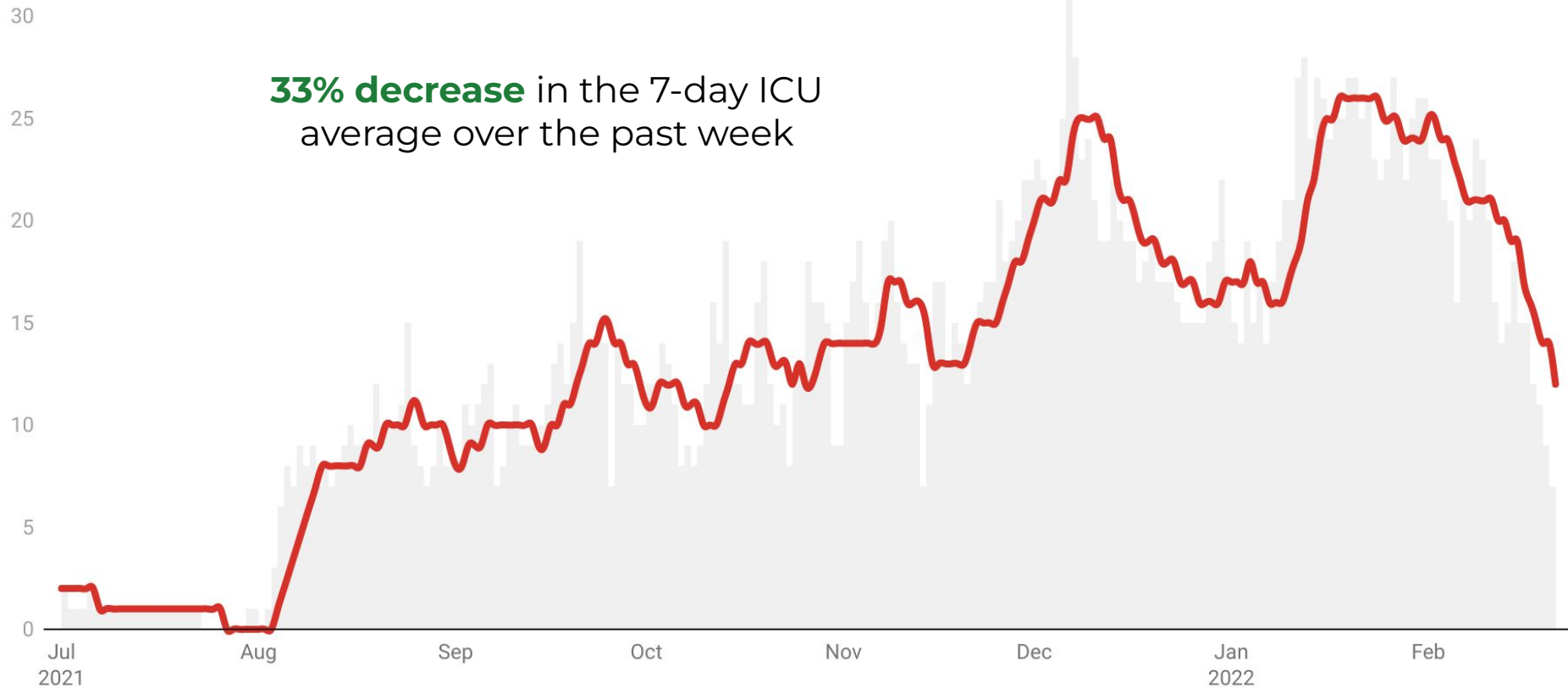


Vermont COVID-19 Patients Currently Hospitalized



Vermont COVID-19 Patients Currently in the ICU

— 7-Day Avg

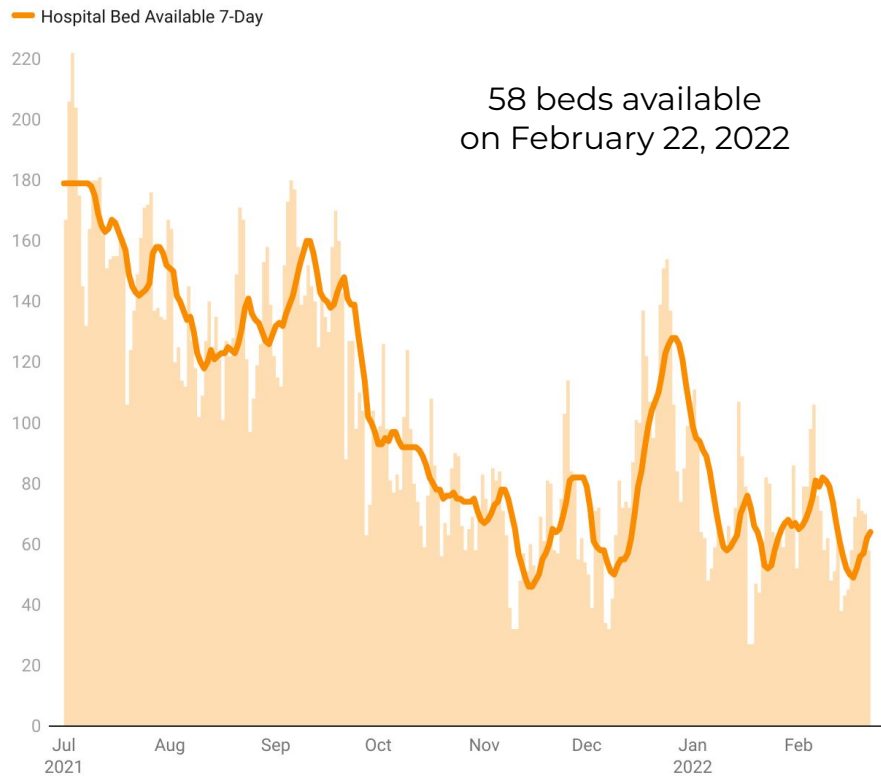


33% decrease in the 7-day ICU average over the past week

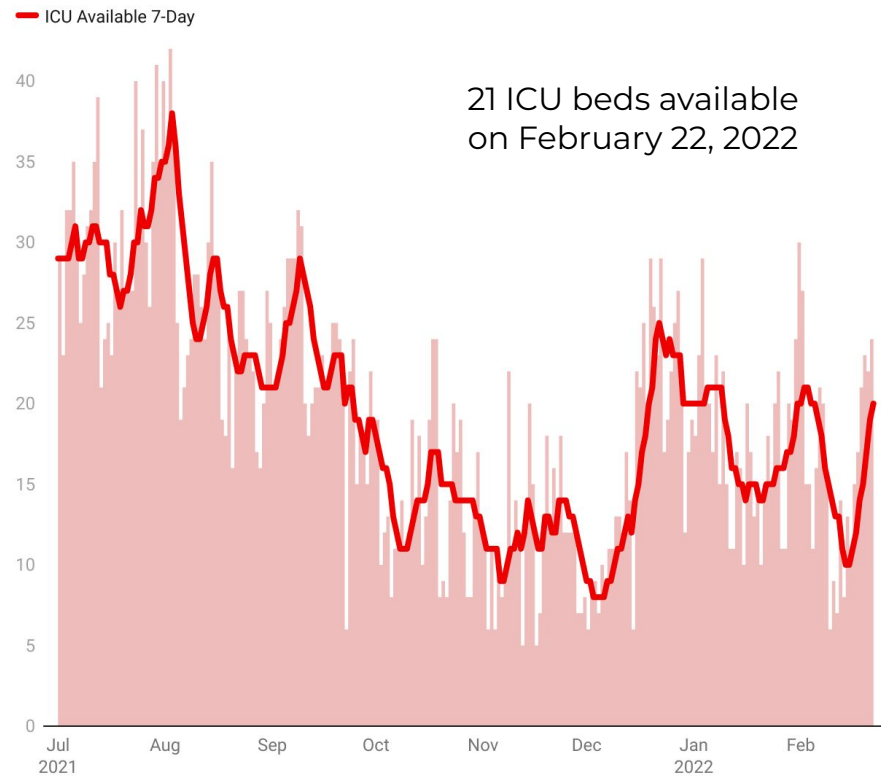
Vermont Hospital Metrics

(7-Day Averages)

Vermont Hospital Beds Available Since July 1, 2021



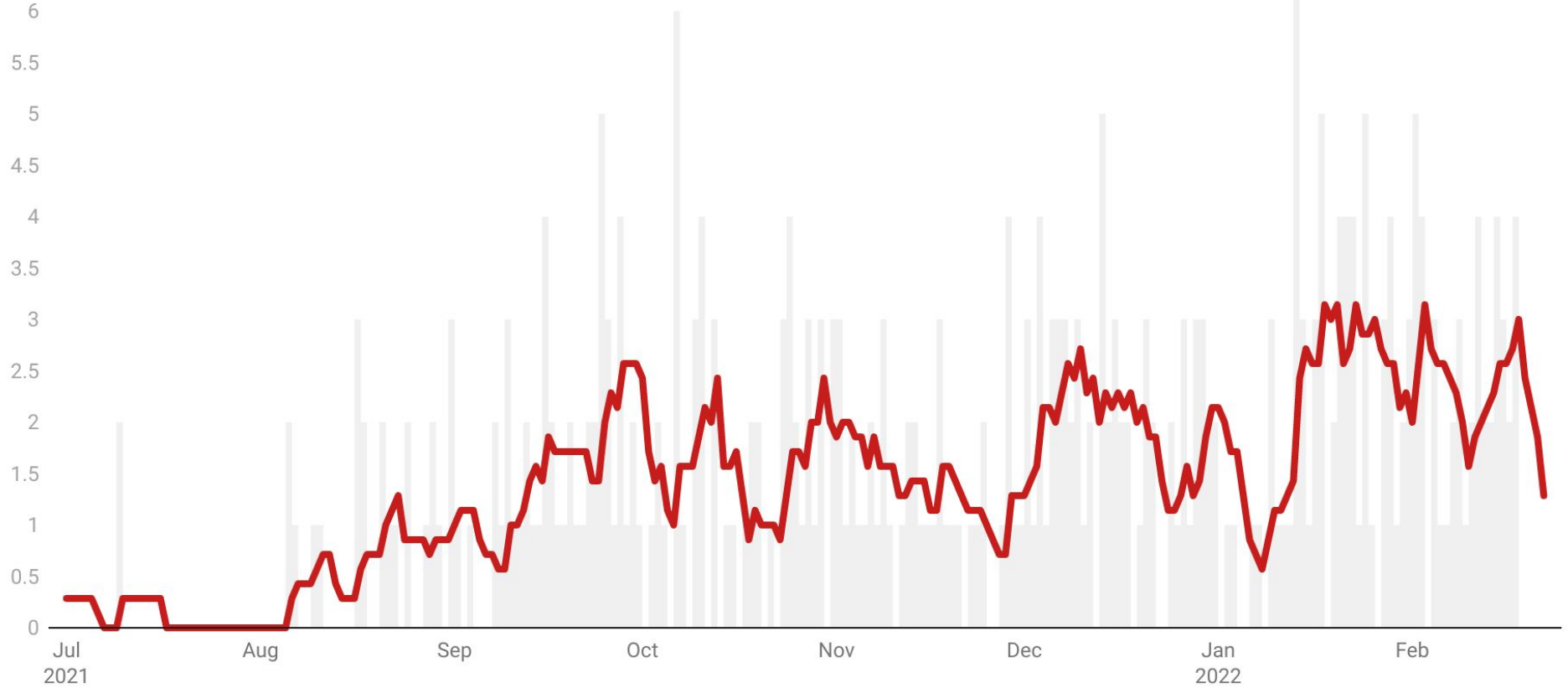
Vermont ICU Beds Available Since July 1, 2021



Vermont Fatality Data

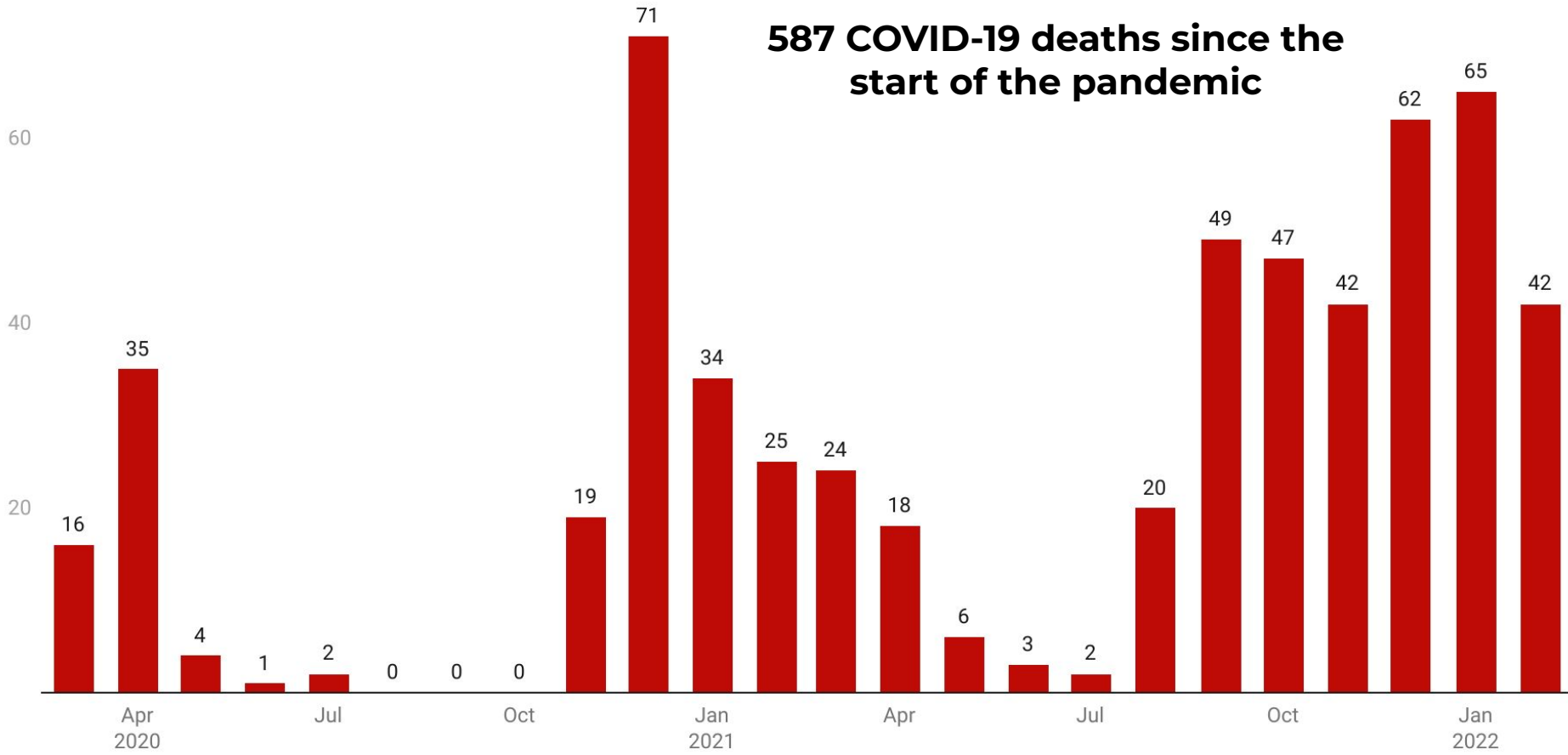
Vermont COVID-19 Fatalities

7-Day Average



Monthly Covid-19 Deaths In Vermont

587 COVID-19 deaths since the start of the pandemic



Source: VDH—February 22, 2022; created with Datawrapper; deaths attributed to month in which death occurred rather than reported

Vermont Vaccination Data

Vermont CDC Vaccine Scorecard

| Vaccine Metric | Ranking |
|---|-----------------|
| Doses Administered per 100K | 1 |
| % At Least 1 Dose (5+ Population) | 1 (tied) |
| % Fully Vaccinated (5+ Population) | 2 |
| % At Least 1 Dose (Full Population) | 4 |
| % Fully Vaccinated (Full Population) | 2 |
| % Fully Vaccinated (65 & Over) | 1 (tied) |

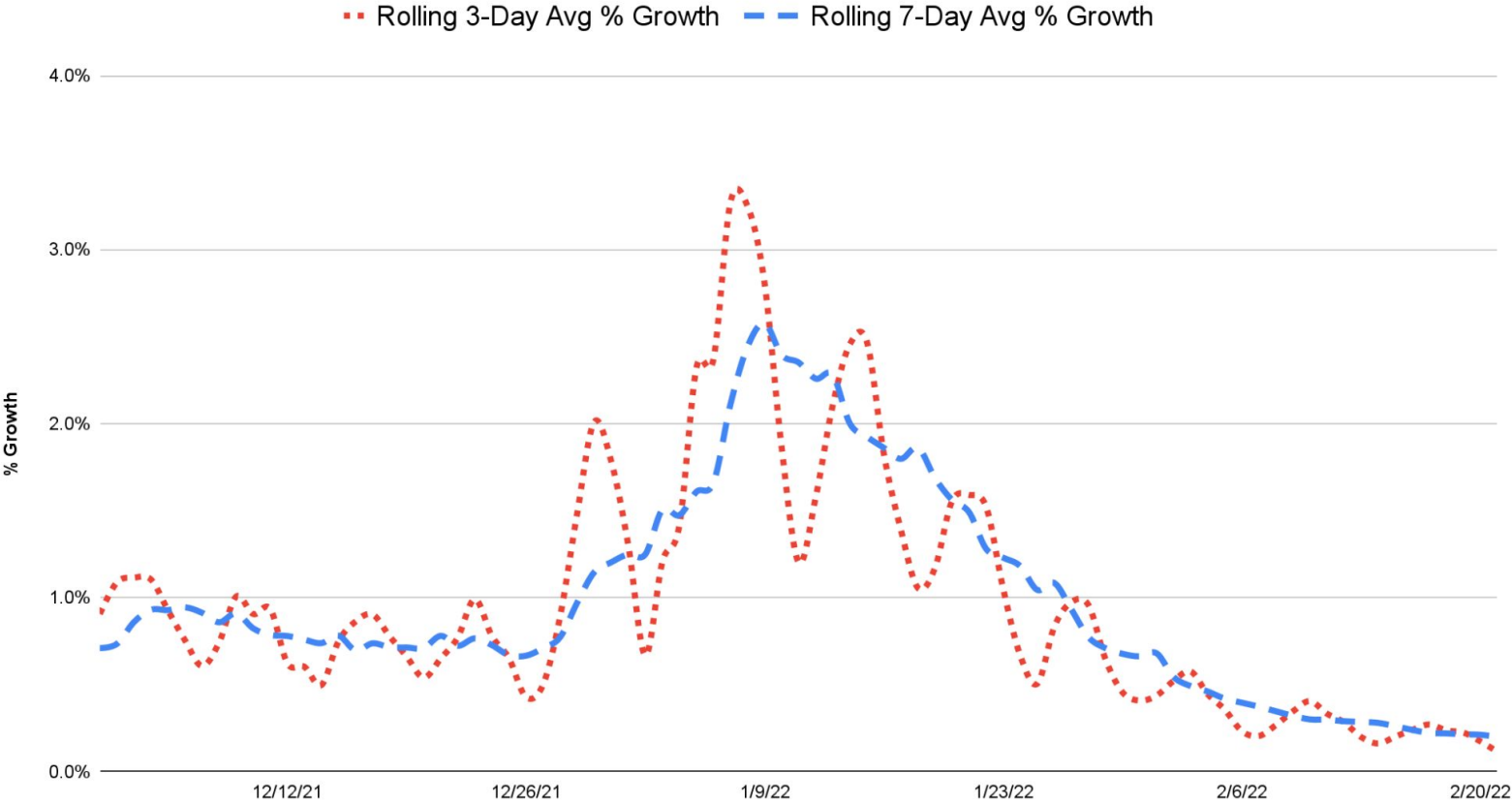
| Booster Metric | Ranking |
|---|----------|
| % of Fully Vaccinated w/ booster dose | 1 |
| % of Fully vaccinated 12+ w/ booster doses | 1 |
| % of Fully vaccinated 18+ w/ booster doses | 1 |
| % of Fully vaccinated 65+ w/ booster doses | 3 |

RESTART VERMONT

Reopening Metrics

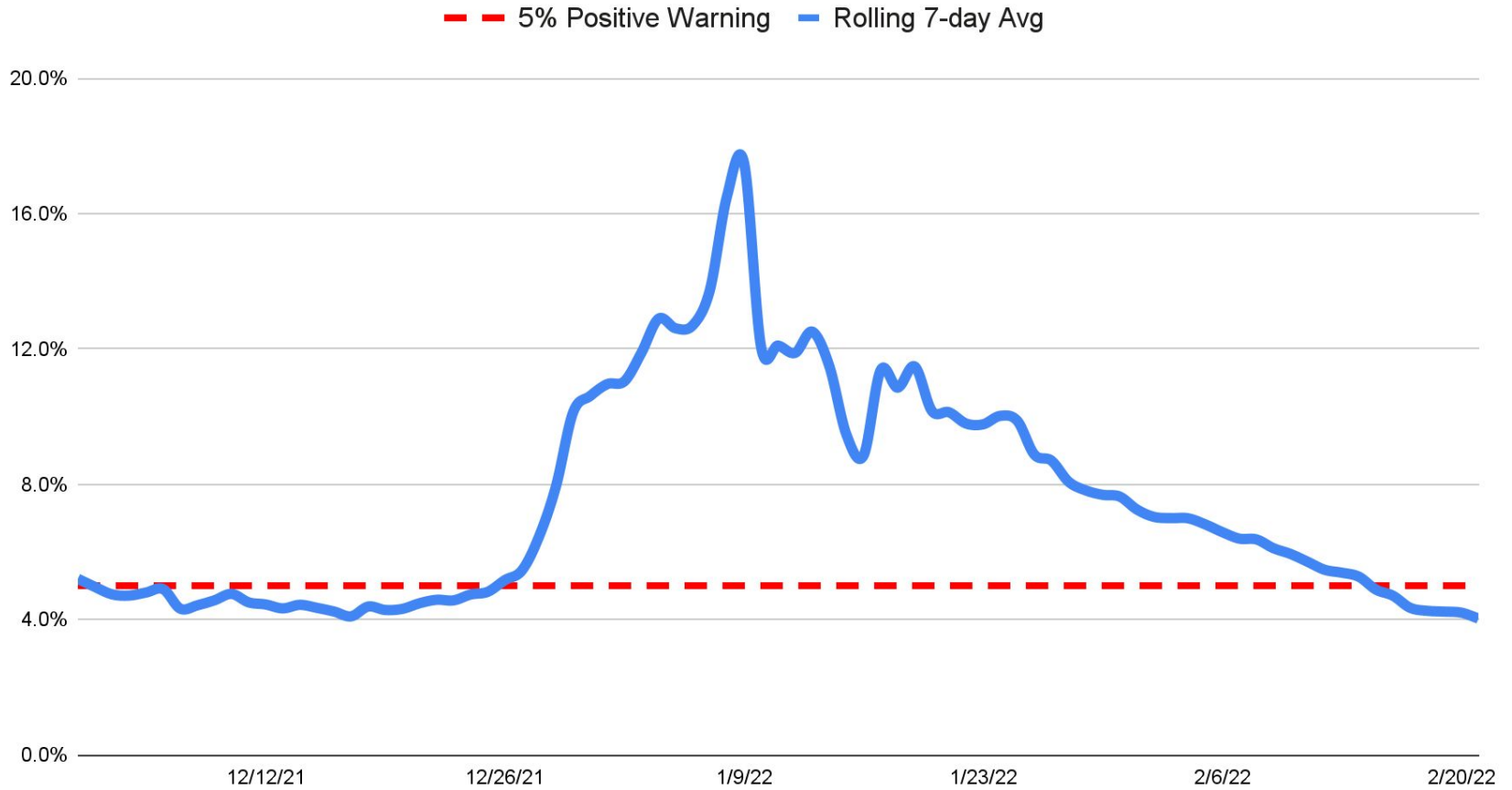
1. Syndromic Surveillance (*retired*)
2. Viral Growth & Reproductive Rates
3. Percentage of New Positive Tests
4. Hospital & Critical Care Bed Capacity
5. Testing Volume

Viral Growth & Reproductive Rates



Source: Vermont Department of Health

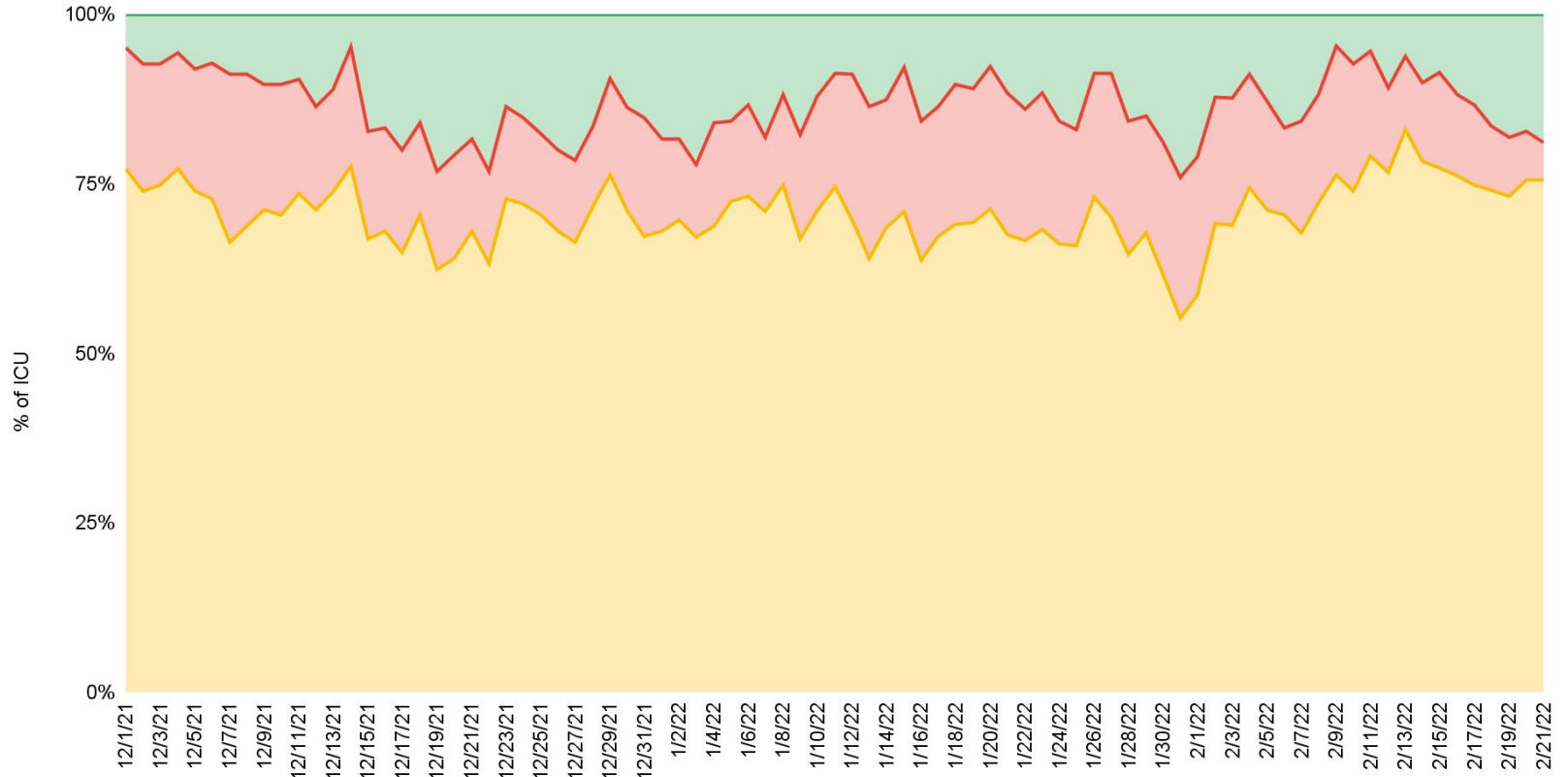
Test Positivity



Source: Vermont Department of Health; 7-day positivity calculated as positive tests last seven days/tests last seven days

Critical Care Beds

Open ICU COVID ICU non-COVID ICU



Vermont Testing

